

Catalog # 1128

3 octave Handbell Quartet

Medium Difficulty

The Gift of Love

O Waly, Waly



arranged by
Paul Kinney

From the Top Music

Albuquerque, NM

www.FromTheTopMusic.com

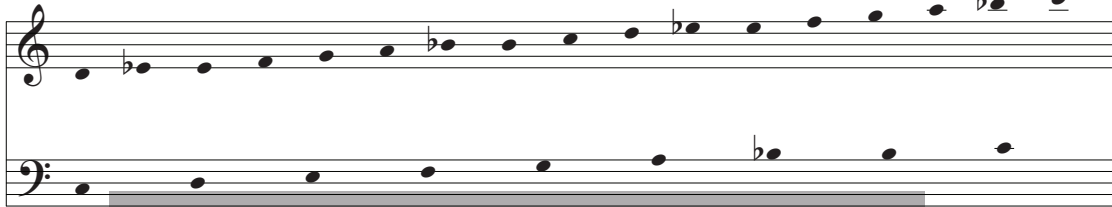
For Jennifer, Harley, and Katy of the Handbell Quartet
of Redford Aldersgate United Methodist Church, Redford, MI

The Gift of Love

Cat. 1128
Medium Difficulty

Handbell Quartet

Handbells Used: 3 Octaves

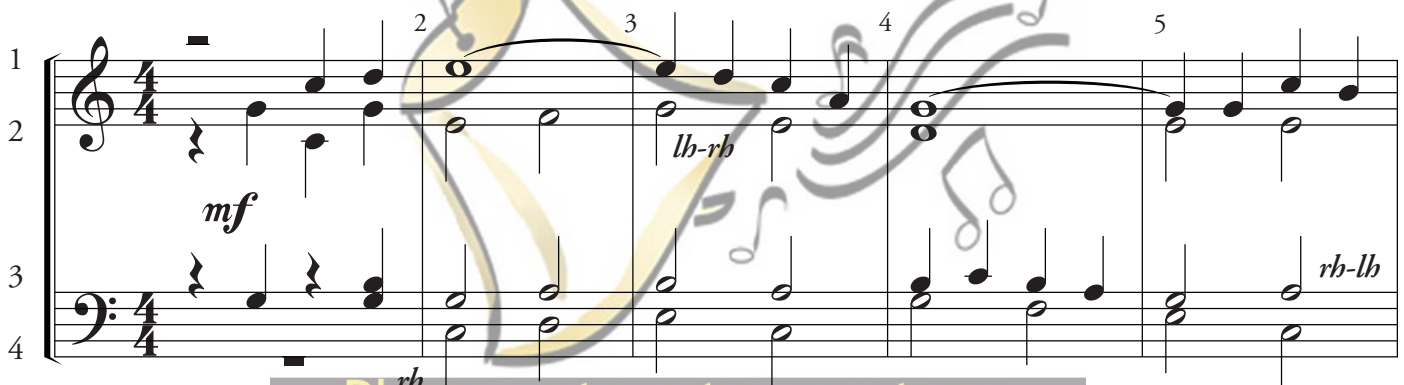


Copyrighted material.

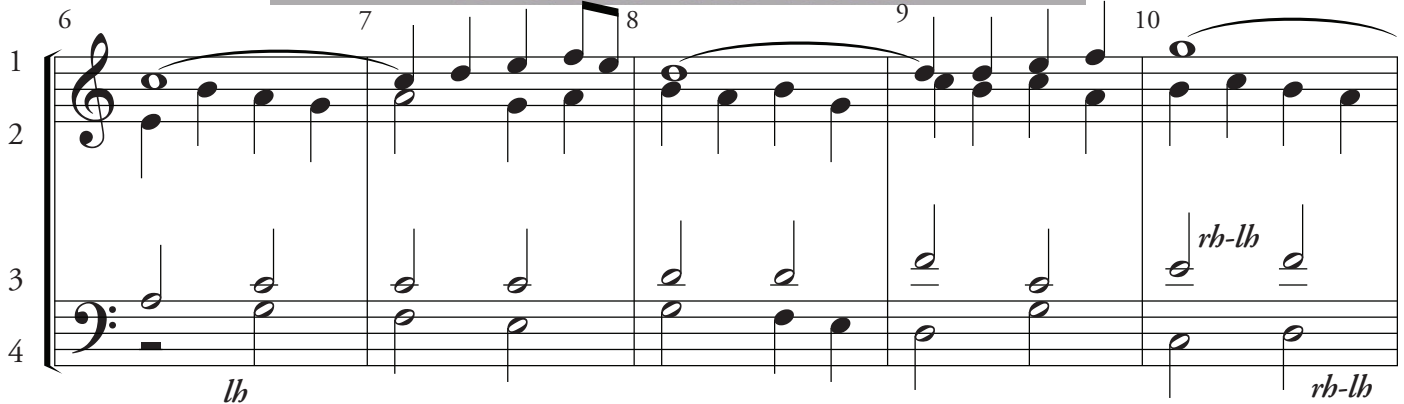
O Waly, Waly
English Folk Tune

Arranged by Paul Kinney
ASCAP

Gently ♩ = c. 88



Please return to our store
to order this item.



11 12 13 14 15

1
2 *rh-lb*
3 *rh-lb*
4

Detailed description: This system contains measures 11 through 15. It features four staves. The top staff (treble clef) has a melodic line with a slur over measures 12-13. The second staff (treble clef) has a bass line with a slur over measures 14-15. The third staff (bass clef) has a bass line with a slur over measures 14-15. The fourth staff (bass clef) has a bass line with a slur over measures 14-15. The notation includes various note values and rests.

16 17 18 19 20

1
2
3
4 *rh-lb*

Detailed description: This system contains measures 16 through 20. It features four staves. The top staff (treble clef) has a melodic line with a slur over measures 17-18. The second staff (treble clef) has a bass line with a slur over measures 19-20. The third staff (bass clef) has a bass line with a slur over measures 19-20. The fourth staff (bass clef) has a bass line with a slur over measures 19-20. The notation includes various note values and rests.

21 22 23 24 25

1
2
3
4 *rh-lb*

Detailed description: This system contains measures 21 through 25. It features four staves. The top staff (treble clef) has a melodic line with a slur over measures 22-23. The second staff (treble clef) has a bass line with a slur over measures 24-25. The third staff (bass clef) has a bass line with a slur over measures 24-25. The fourth staff (bass clef) has a bass line with a slur over measures 24-25. The notation includes various note values and rests.

26 27 28 29 30

1
2
3
4 *lh* *rh*

Detailed description: This system contains measures 26 through 30. It features four staves. The top staff (treble clef) has a melodic line with a slur over measures 27-28. The second staff (treble clef) has a bass line with a slur over measures 29-30. The third staff (bass clef) has a bass line with a slur over measures 29-30. The fourth staff (bass clef) has a bass line with a slur over measures 29-30. The notation includes various note values and rests.

31 32 33 34 35

1
2
3
4

rh-lb

rh-lb

Detailed description: This system contains measures 31 through 35. It features four staves. Staves 1 and 2 are in treble clef, and staves 3 and 4 are in bass clef. The key signature has one flat. Measure 31 shows a melodic line in the first staff and a bass line in the third staff. Measure 32 continues the melodic line. Measure 33 has a whole rest in the first staff and a bass line in the third staff. Measure 34 has a whole rest in the first staff and a bass line in the third staff. Measure 35 has a whole rest in the first staff and a bass line in the third staff. The notation includes various note values, rests, and dynamic markings.

36 37 38 39 40

1
2
3
4

rh-lb

lb

Detailed description: This system contains measures 36 through 40. It features four staves. Staves 1 and 2 are in treble clef, and staves 3 and 4 are in bass clef. The key signature has one flat. Measure 36 shows a melodic line in the first staff and a bass line in the third staff. Measure 37 continues the melodic line. Measure 38 has a whole rest in the first staff and a bass line in the third staff. Measure 39 has a whole rest in the first staff and a bass line in the third staff. Measure 40 has a whole rest in the first staff and a bass line in the third staff. The notation includes various note values, rests, and dynamic markings.

41 42 43 44 45

1
2
3
4

lb

lb

Detailed description: This system contains measures 41 through 45. It features four staves. Staves 1 and 2 are in treble clef, and staves 3 and 4 are in bass clef. The key signature has one flat. Measure 41 has a whole rest in the first staff and a bass line in the third staff. Measure 42 continues the melodic line in the first staff and the bass line in the third staff. Measure 43 continues the melodic line. Measure 44 continues the melodic line. Measure 45 has a whole rest in the first staff and a bass line in the third staff. The notation includes various note values, rests, and dynamic markings.

46 47 48 49

1
2
3
4

rit.

lb-rh

Detailed description: This system contains measures 46 through 49. It features four staves. Staves 1 and 2 are in treble clef, and staves 3 and 4 are in bass clef. The key signature has one flat. Measure 46 shows a melodic line in the first staff and a bass line in the third staff. Measure 47 continues the melodic line. Measure 48 has a whole rest in the first staff and a bass line in the third staff. Measure 49 has a whole rest in the first staff and a bass line in the third staff. The notation includes various note values, rests, and dynamic markings.